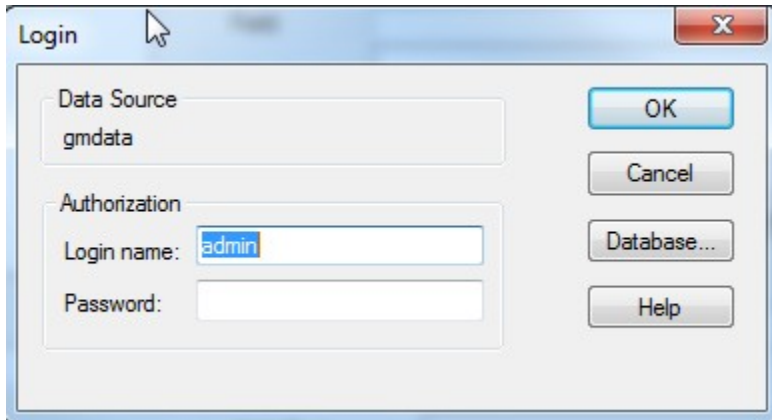


How to Use SQL ODBC Connection with Blank Password Set

Description

Within an ODBC connection for SQL you can set the password to be blank. When you do this, every time you try to add that ODBC connection to a label, you will be prompted to enter a password.



Article Number

2017010

Versions

LPS 9.8 and up

Environment

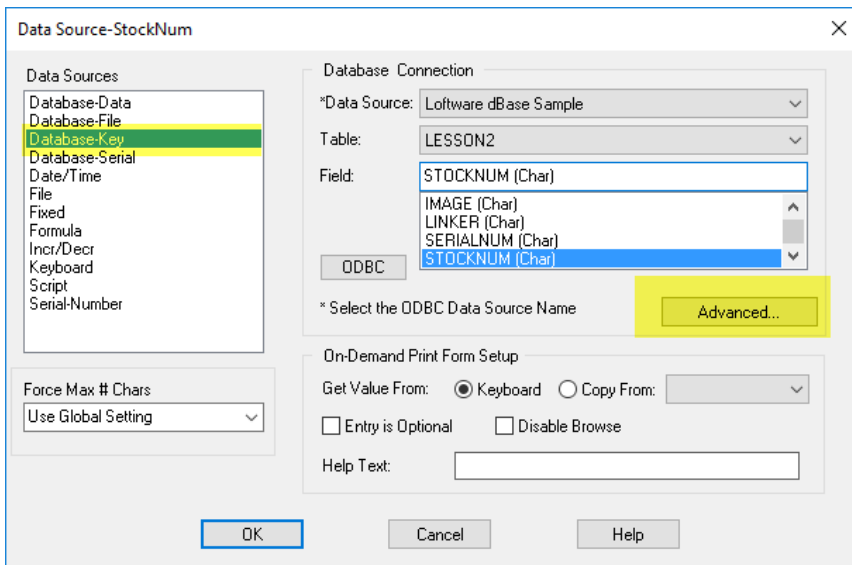
Windows operating systems

The Software Print Server (LPS) does not understand the blank password setup on the ODBC connection setup screen. In order to get by this screen and connect to the database, the username has to be entered manually and the password left blank, then select OK. This works for On-Demand Print 32 or On-Demand print client, because it is a manual process. However, this does not work when using the Software Print Server. When using the Software Print Server, the LPS will error because it does not know how to handle the pop-up box asking for the username and password.

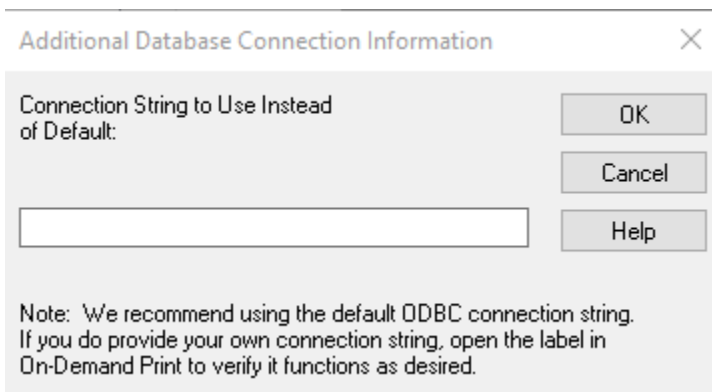
How to use a SQL ODBC Connection with a blank password

Once you have your ODBC connection setup with a blank password, you will need to do the following on the label in Design 32.

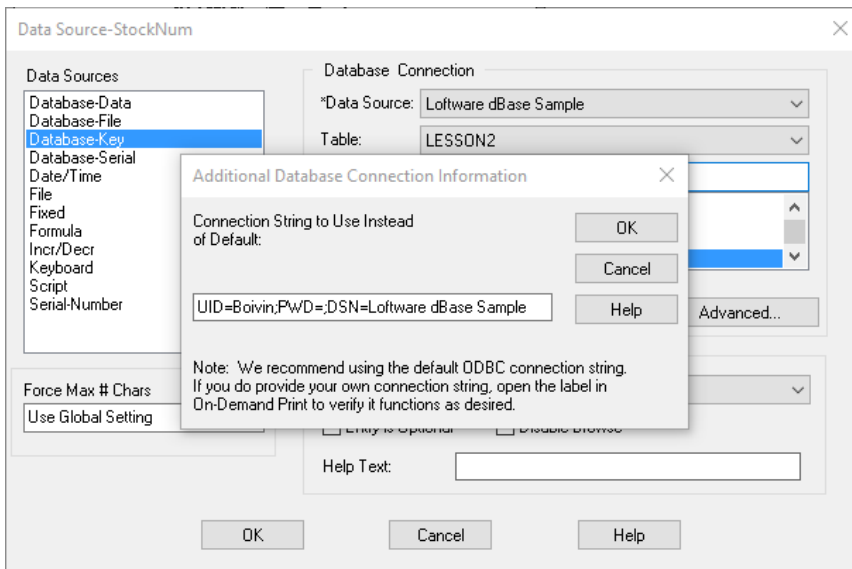
1. Open Design 32
2. Select the field which has the data source Database-Key, and then select the **Advanced button**



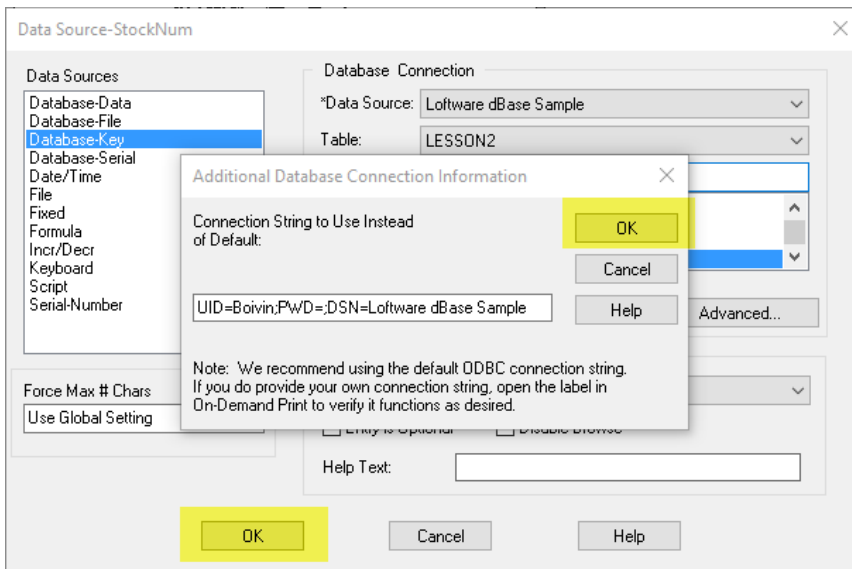
3. Once you select **Advanced** you get an additional pop-up box called Addition Database Connection Information.



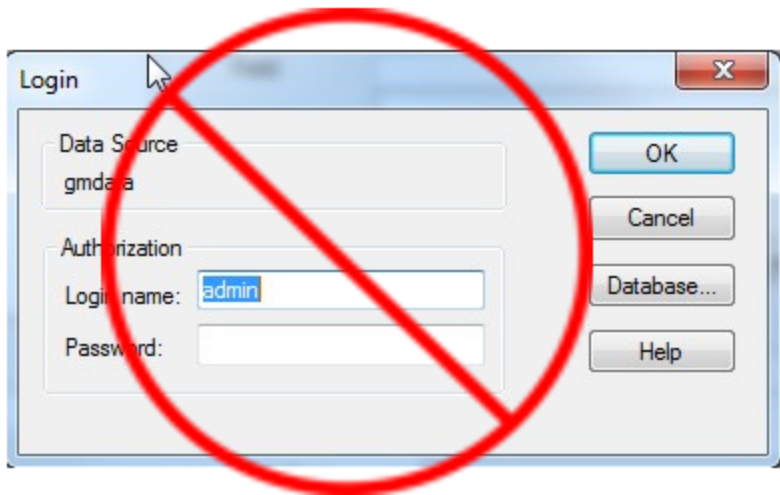
4. In the box you will type the following: `UID=<username>;PWD=;<DSNName>;`
 1. UID - This is the username to access the database
 2. PWD - This is the password for the username supplied for UID
 3. DSN - This is the ODBC connection name
5. Notice in this instance the the **PWD=;** this means leave the PWD blank. the semi colon is a separator so Software knows the password has ended.



1. For this sample the User ID is Boivin, the Password is blank and the DSN name is Loftware dBase Sample
6. Select **OK** to close out the Additional Database Connection Information box, and then select **OK** to close the Data Source box.



7. Save your label, and now when opening in Design 32, and or processing through the Loftware Print Server you do not get prompted for the username and password pop-up box.



Page:Data From an SQL Database Displaying as Scientific Notation (Loftware Print Server Family Knowledge Base)

- kb-troubleshooting-article
- odbc
- sql
- scientific-notation

Page:How to Use SQL ODBC Connection with Blank Password Set (Loftware Print Server Family Knowledge Base)

- lps
- blank
- connection
- password
- odbc
- kb-how-to-article
- sql

Page:LPS Does Not Print Labels Connected To SQL Databases (Loftware Print Server Family Knowledge Base)

- kb-troubleshooting-article
- connection-string
- odbc
- sql
- file-drop

Page:How to Install 32 bit ODBC Driver for Excel 2010 and Later (xlsx) (Loftware Print Server Family Knowledge Base)

- msoffice
- office
- access
- 32bit
- odbc
- kb-how-to-article
- excel
- sql
- dbase
- missing
- microsoft

Page:Loftware Connector for Oracle Installation Fails with Unexpected SQL Error: Closed Connection (Loftware Print Server Family Knowledge Base)

- connector
- connection
- kb-error-message
- oracle
- closed
- sql