

Connector for SAP: How to Display More Than 10 Labels Per Page

Description

In the SAP Connector Console, only 10 rows of labels are displayed by default. Some conditions can exist where viewing more than 10 rows of labels per page are required.

Article Number

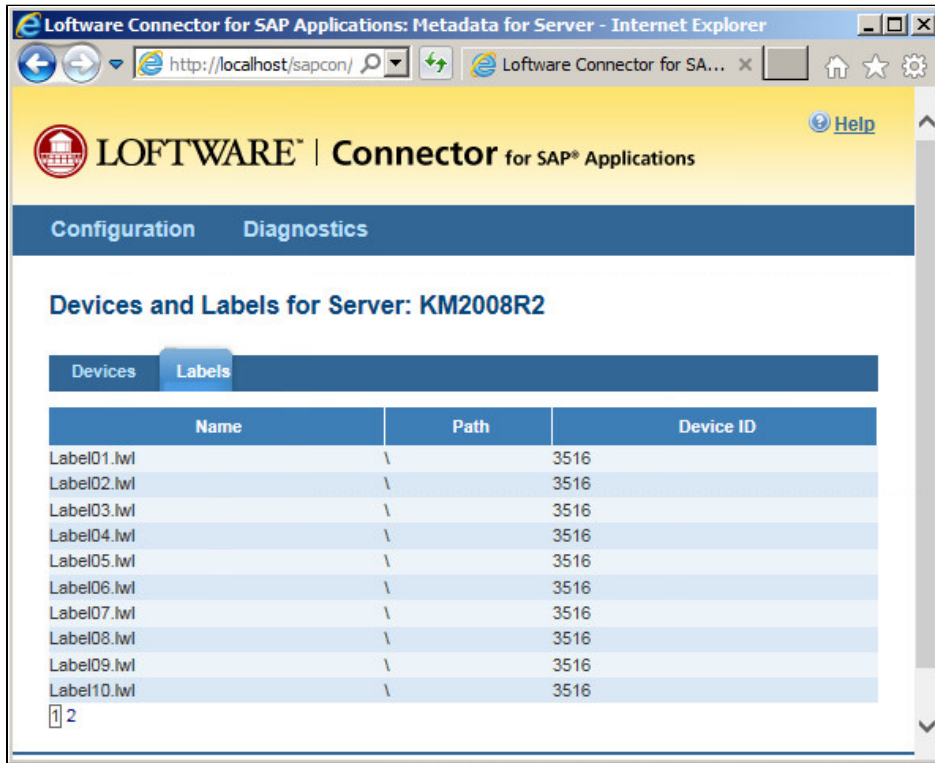
2017131

Versions

All supported LPS family product versions

Environment

Any supported LPS family product environment



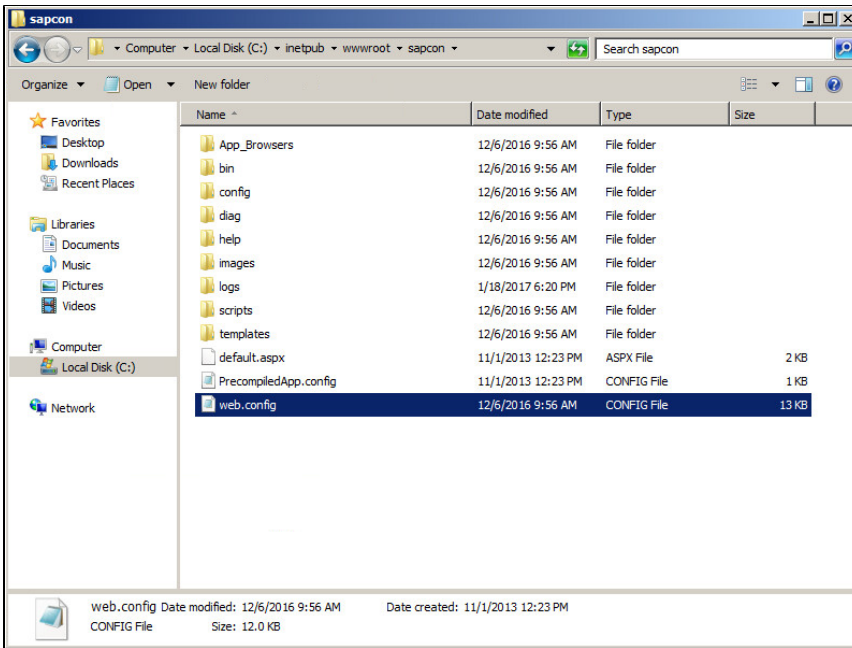
The screenshot shows the 'Software Connector for SAP Applications: Metadata for Server - Internet Explorer' window. The page title is 'SOFTWARE | Connector for SAP® Applications'. There are tabs for 'Configuration' and 'Diagnostics'. The main content area is titled 'Devices and Labels for Server: KM2008R2'. Below this, there are two tabs: 'Devices' and 'Labels'. The 'Labels' tab is active, displaying a table with the following data:

Name	Path	Device ID
Label01.lwl	\	3516
Label02.lwl	\	3516
Label03.lwl	\	3516
Label04.lwl	\	3516
Label05.lwl	\	3516
Label06.lwl	\	3516
Label07.lwl	\	3516
Label08.lwl	\	3516
Label09.lwl	\	3516
Label10.lwl	\	3516

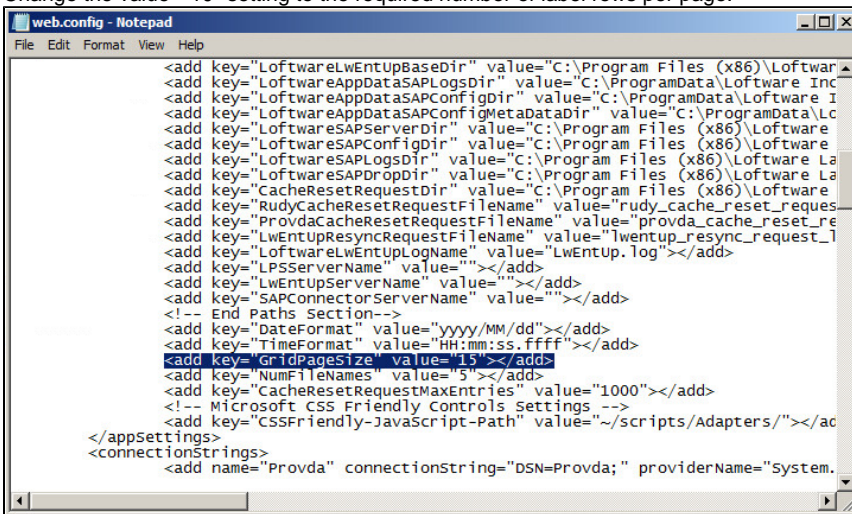
At the bottom left of the table, there is a small box containing the number '2'.

How to increase the number of label rows per page in the SAP Connector Console

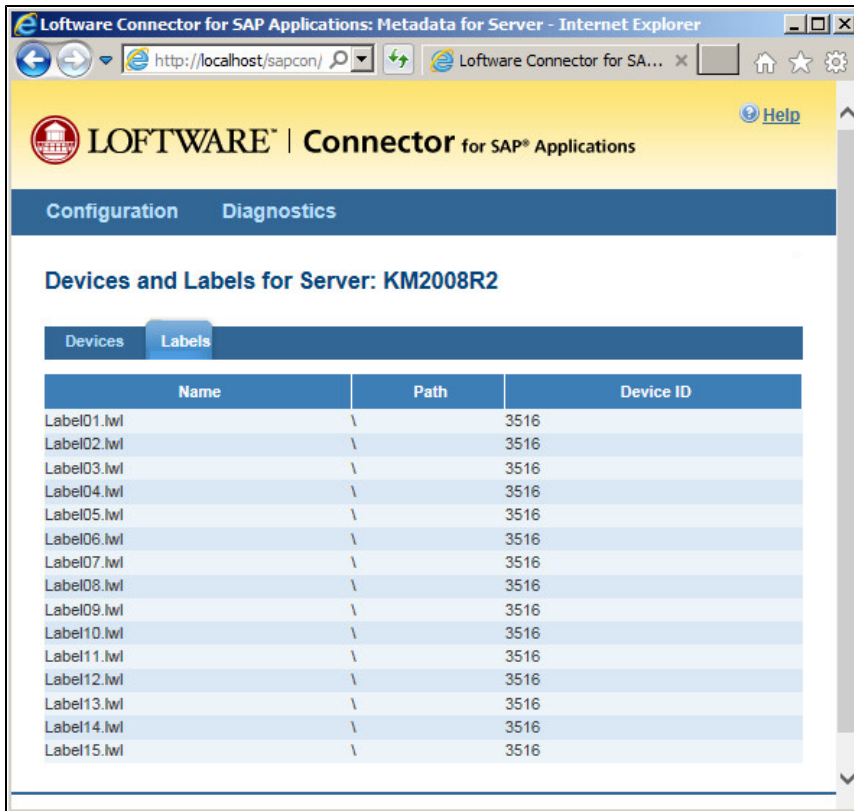
1. Edit the c:\inetpub\wwwroot\sapcon\web.config file.



2. Locate the following entry:
`<add key="GridPageSize" value="10"></add>`
3. Change the value="10" setting to the required number of label rows per page.



4. Save the file.
5. Refresh the SAP Connector Console screen to view the new number of label rows per page.



Related Articles

Page: LPS Client Supported Operating Systems

- os
- operating
- lps
- supported
- client
- demand
- on
- server
- loftware
- kb-how-to-article
- system
- print

Page: Upgrading LWA Windows Server 2008 R2 Operating System to Windows Server 2016 Operating System

- lwa
- kb-how-to-article
- redirect

Page: Voice Pick Code Script for Mixed Pallet Labeling

- voice
- voicepick
- pti
- pick
- 7
- milestone
- kb-how-to-article
- code

Page: Cannot Print Greater-Than (>) Characters in Code-128 Barcode When Using Zebra Printer

- greater-than
- zebra
- kb-how-to-article
- barcode
- 128

Page: Using Datamatrix Format ID and Error Correction Level settings

- datamatrix

- format
- kb-how-to-article
- error