

# Warning FIELDOFFLABEL Field is Partly off Label

## Message

When using Design 32 to save a label the warning "FIELDOFFLABEL" appears but there doesn't appear to be any fields close to being off the label!

Warning: FIELDOFFLABEL: Field 'xxxxxxx' is partly off the label. ('xxxxxxx' can represent any field name)

## Article Number

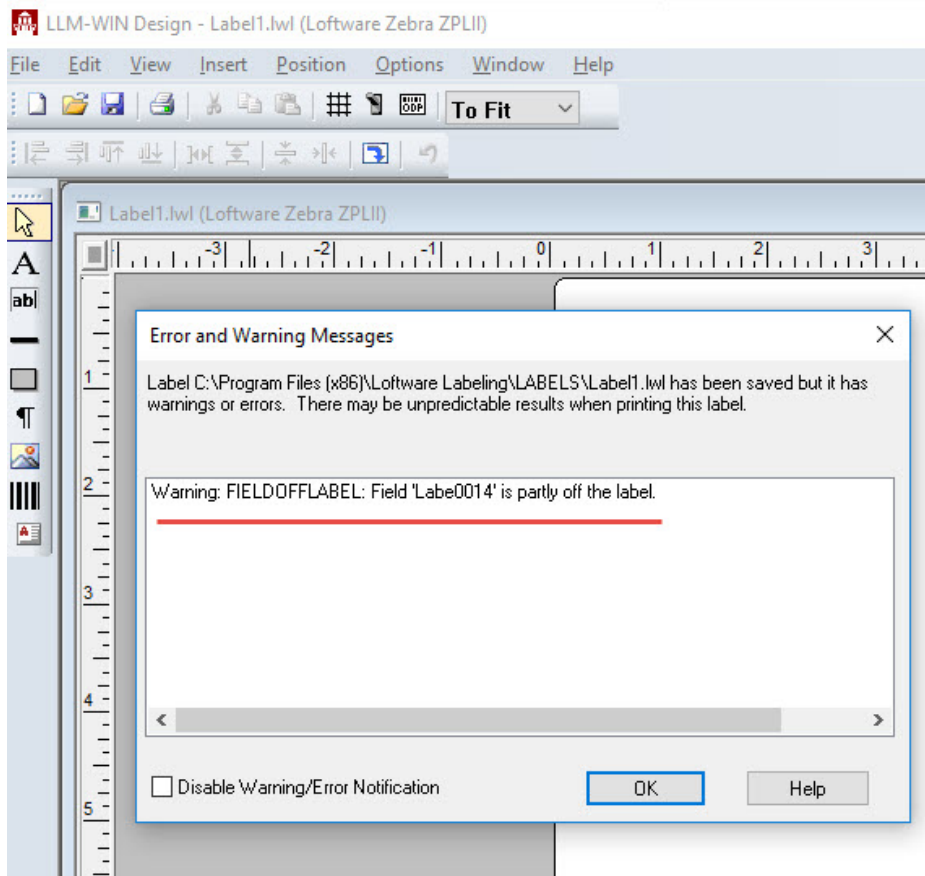
2017021

## Versions

Software Label Manager and Software Print Server version 9.5 and higher

## Environment

All supported LLM and LPS environments

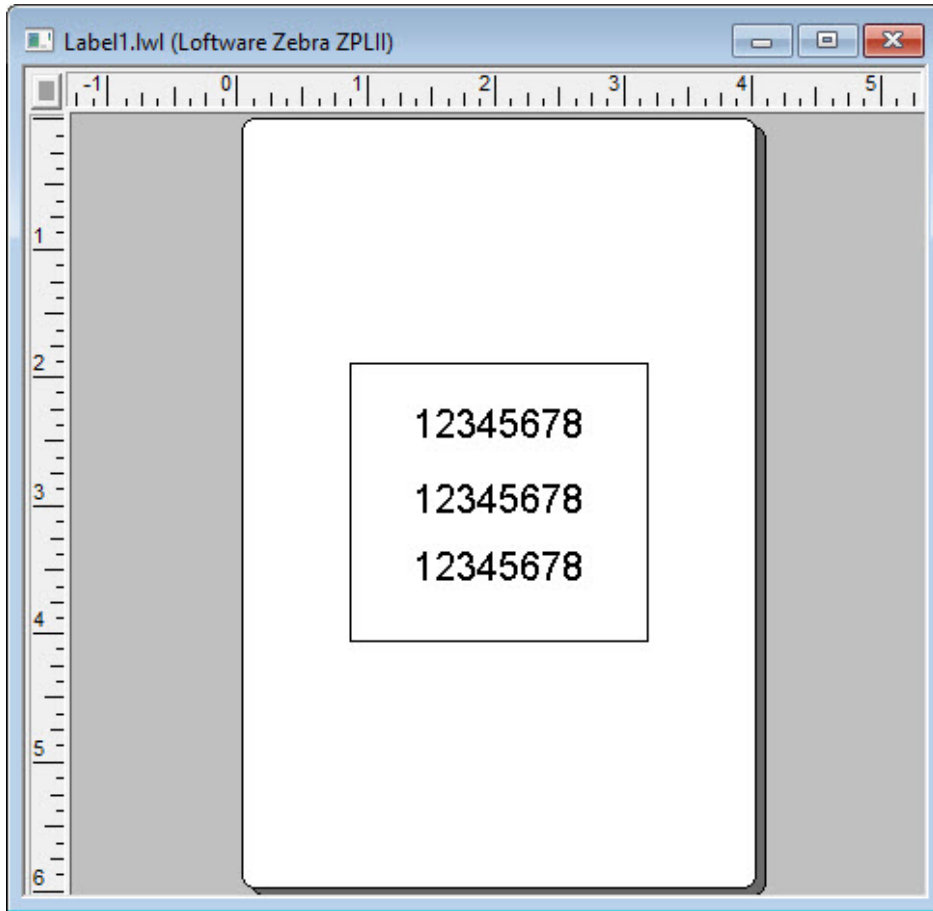


## Explanation

From time-to-time our support team receives a question about this Warning message. If you look at the label shown below you'll see four fields, three **Text** fields and one **Box** field.

None of the fields are off the label and it would appear there are no **Label** fields as indicated by the field name listed in the warning: **Labe0014**.

So, why would a FIELDOFFLABEL warning be shown and why would a Label field be indicated when none appear to exist?

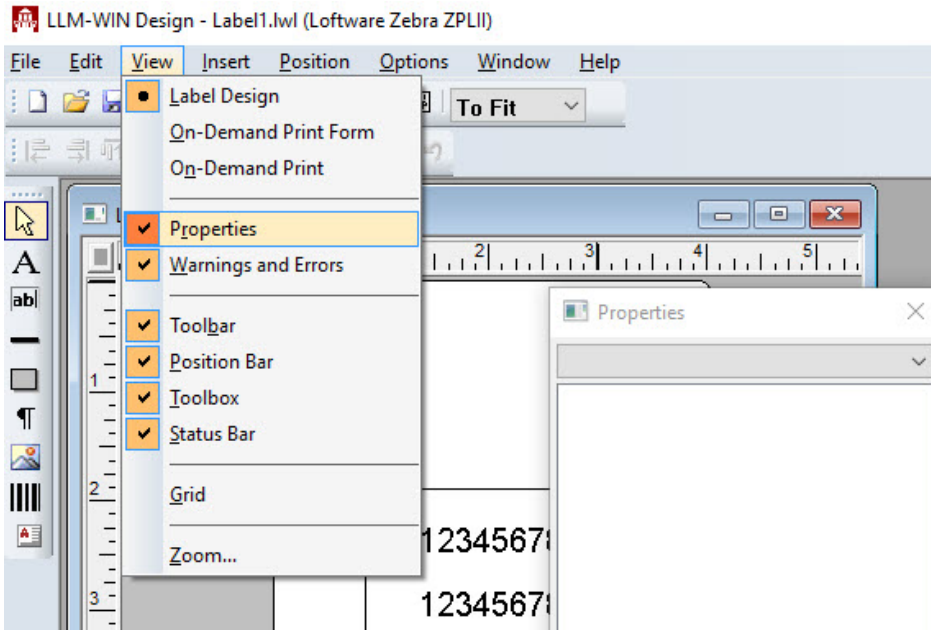


The answer is that this Label field certainly **does** exist and it **is** off the label, but as can be the case, you simply can't see it.

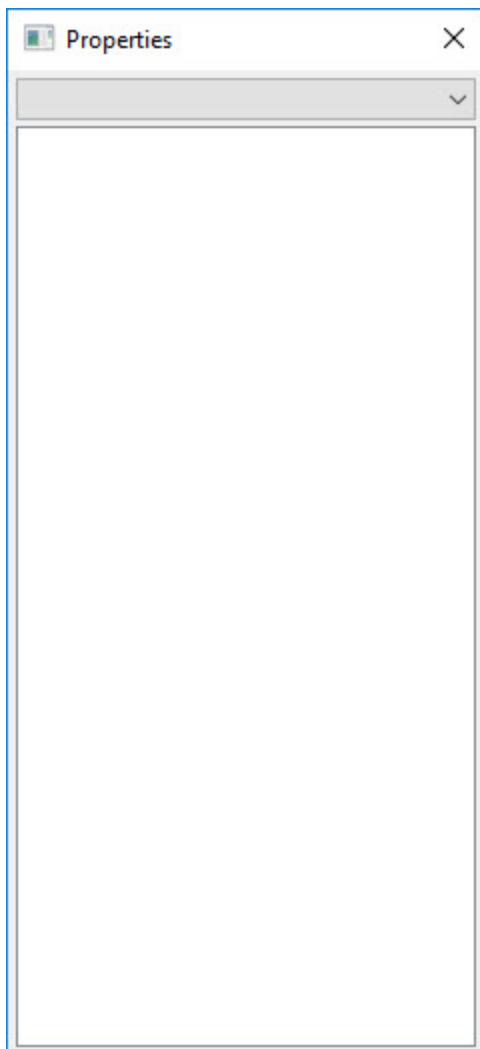
## Solution

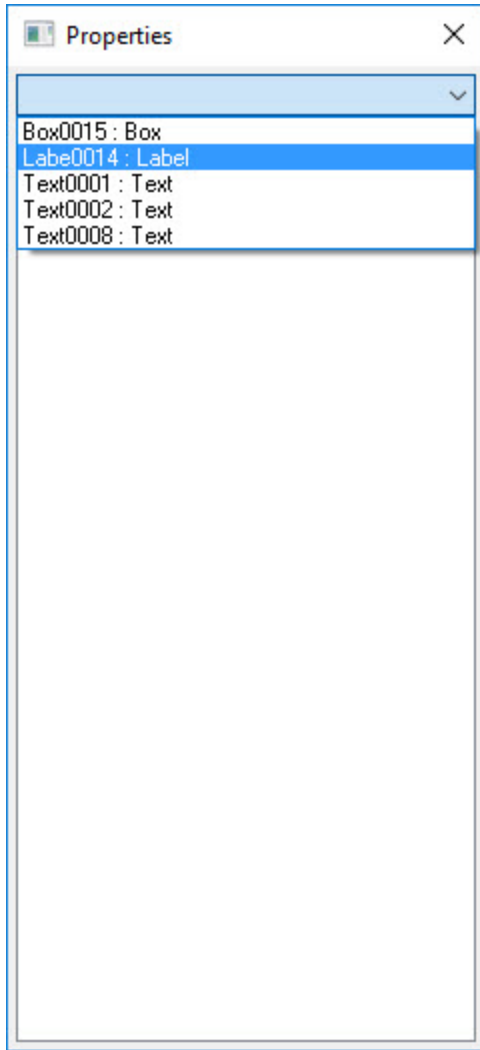
Now, lets discuss how to resolve this issue.

The first step is to open the **Properties** box within Design 32 if it's not already open. From Design 32's menu select **View** and then **Properties** so the **Properties** window will appear.



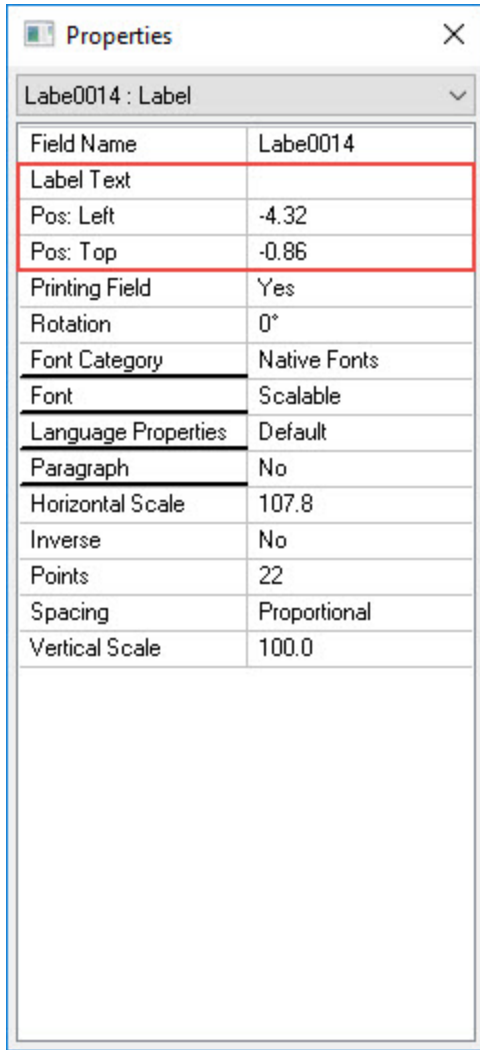
Next, from the drop down list within the **Properties** window, locate and select the field name which matches the field name shown in the **Warning** message. In this example it's Labe0014.



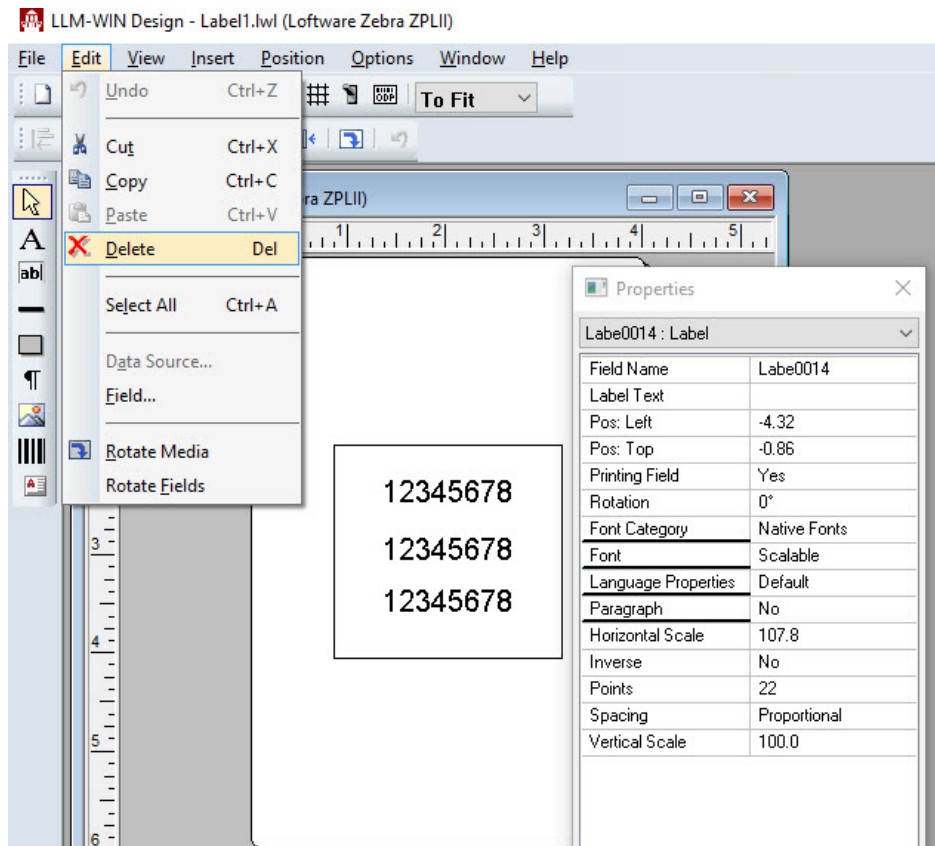


After the field is selected, the properties of that field will be displayed in the **Properties** window.

Looking at the image below we see that Labe0014 is in fact a Label field and the negative values for **Position Top** and **Position Left** will definitely place this field off the label. Another interesting point is that the **Label Text** value is empty, so that's why this field is not visible.

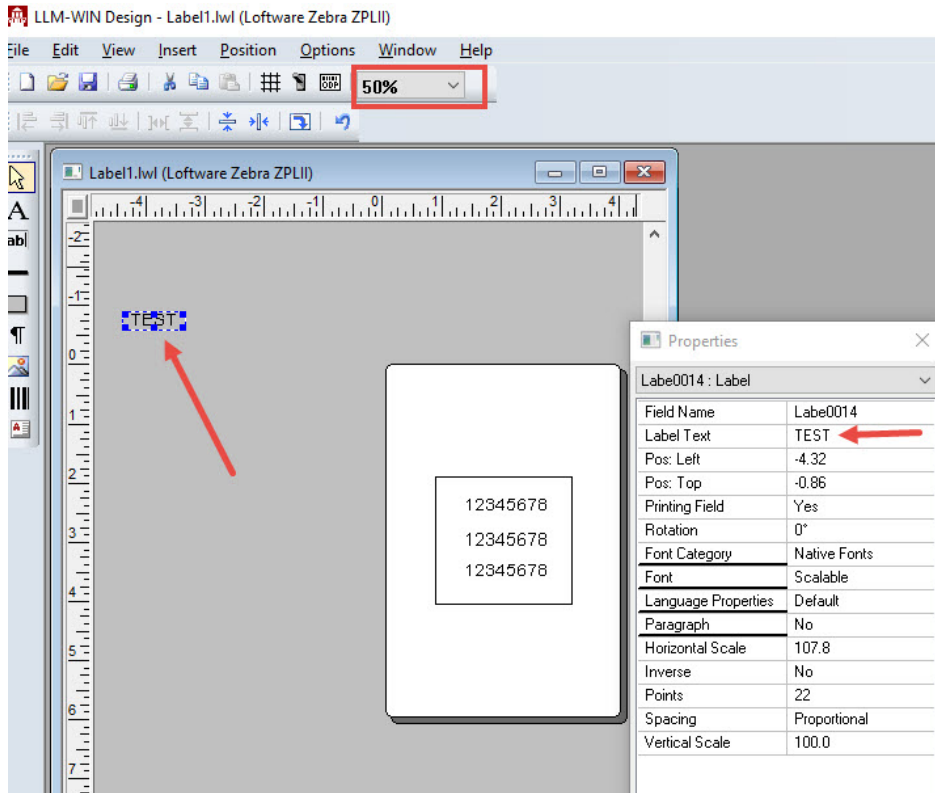


At this point, since Labe0014 is selected in the **Properties** window, we could simply click **Edit** then **Delete** from the menu, or press the **Delete** key, to remove this unwanted field from the label. The label can now be saved and the FIELDOFFLABEL warning will no longer appear.



For those more curious, this field can be "seen" by entering some data into the **Label Text** property. In the screen shot below, the value TEST was placed in the **Label Text**. Also, the **Zoom Level** was changed from "To Fit" to "50%" to display a bit more of the canvas around the label, as field Labe0014 is well outside the label.

Now, as indicated before, click **Edit** then **Delete**, or press the **Delete** key to remove the unwanted field from the label. The label can now be saved without the FIELDOFFLABEL warning appearing.



## Related Articles

Page: [Fields Not Printing On a Label On an Intermec Printer \(Software Print Server Family Knowledge Base\)](#)

- [kb-troubleshooting-article](#)
- [field](#)

Page: [How to Display TrueType Character Height and Width in the Property Specific Options Box \(Software Print Server Family Knowledge Base\)](#)

- [truetype](#)
- [font](#)
- [kb-how-to-article](#)
- [field](#)

Page: [How To Locate And Delete Empty Or Blank Fields \(Software Print Server Family Knowledge Base\)](#)

- [empty](#)
- [blank](#)
- [kb-how-to-article](#)
- [field](#)

Page: [Field Level Scripting Sample \(Software Print Server Family Knowledge Base\)](#)

- [kb-how-to-article](#)
- [image](#)
- [field](#)

Page: [Missing Fields on an Intermec 3400 \(Software Print Server Family Knowledge Base\)](#)

- [kb-troubleshooting-article](#)
- [field](#)
- [missing](#)