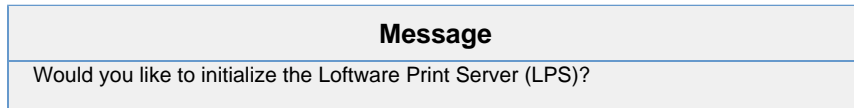


Installation Question - Would You Like to Initialize the Loftware Print Server (LPS)?

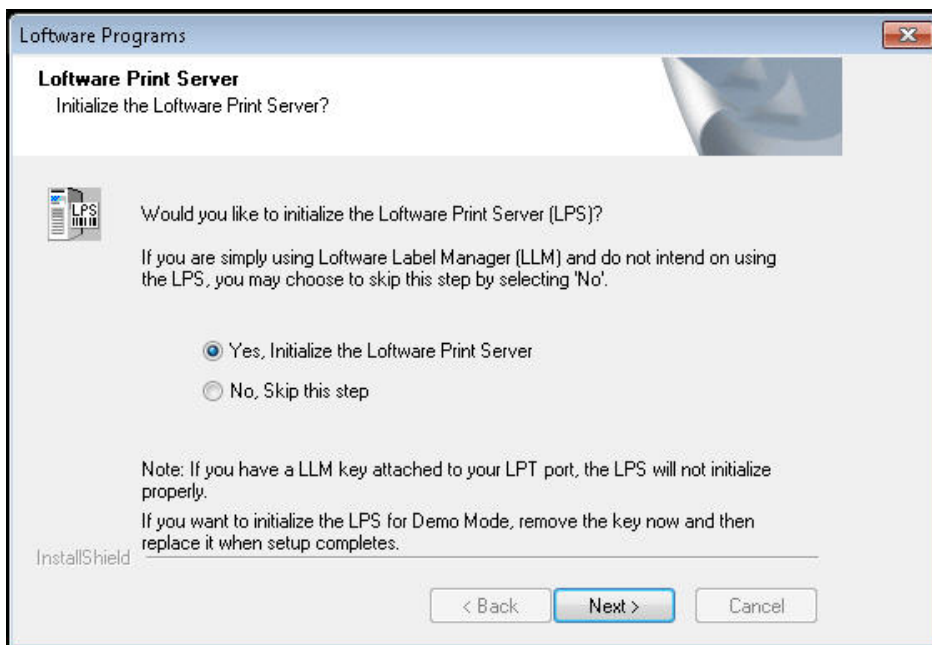
Description

During the installation process for the Loftware Print Server you may be presented with a dialog box asking the following question:



A screen shot of this dialog box is shown below.

From time to time, questions arise as to the meaning of the word "initialize".



Explanation

In Loftware versions prior to 9.5, both the Loftware Label Manager and Loftware Print Server software were installed from the same software distribution packages. Customers with only Loftware Label Manager licenses should have answered "No", while customers with a Loftware Print Server license should have always answer "Yes".

In Loftware versions 9.5 and higher, the Loftware Label Manager and Loftware Print Server software were separated into their own software distribution packages, so only those installing from the LPS distribution receive the "Would you like to initialize the Loftware Print Server (LPS)?" prompt.

If you plan to use the Loftware Print Server, you should always select "YES". The word "Initialize" only means to install and prepare the Loftware Print Server for use. If you are upgrading or "repairing" an existing LPS, continue to select "YES". No previous settings or configuration adjustments will be lost.

Typical situations where this dialog box displays include:

- Performing a new installation of the LPS.
- Performing an upgrade of the LPS to a higher version.
- Running the installation program and performing a "Repair" operation on the existing version.

Article Number

2014033

Versions

LPS version 8.x and higher

Environment

All supported installation environments.

To repeat, If you plan to use the Loftware Print Server, you should **always select** "YES". Any previous LPS settings will remain intact and no LPS settings or configuration adjustments will be lost.

Related Articles

Page: [Installing_Running Without a Key](#) (Loftware Print Server Family Knowledge Base)

- [install](#)
- [running](#)
- [key](#)
- [kb-troubleshooting-article](#)

Page: [Can I Move the Loftware Resources To a Drive Other Than the One Owned By the Quorum After Installing Loftware In a Cluster Environment?](#) (Loftware Print Server Family Knowledge Base)

- [install](#)
- [move](#)
- [cluster](#)
- [kb-how-to-article](#)

Page: [Installation Question - Would You Like to Initialize the Loftware Print Server \(LPS\)?](#) (Loftware Print Server Family Knowledge Base)

- [install](#)
- [articles](#)
- [how-to](#)

Page: [Error 421 Unable to Launch...clustertool.exe.](#) (Loftware Print Server Family Knowledge Base)

- [install](#)
- [update](#)
- [kb-error-message](#)
- [windows](#)

Page: [Error Unable To Create Install Log](#) (Loftware Print Server Family Knowledge Base)

- [install](#)
- [log](#)
- [kb-error-message](#)