

How the Display and Allow Changes Setting on a File Data Source Affects the Printed Label

Description

This article explains how, when using a File Data Source, the **Display on Form** setting of **Display and Allow Changes** affects the printed label.

Article Number

2017143

Information

A field having a File Data Source will display on the On Demand Print form the path and file name of the file containing the data for that field. When the label prints, the text contained within the file specified will print in the field. **Display and Allow Changes** allows the user to select a different text file to be used during the print process. The text from the newly selected file will be used as the data for the field when printed.

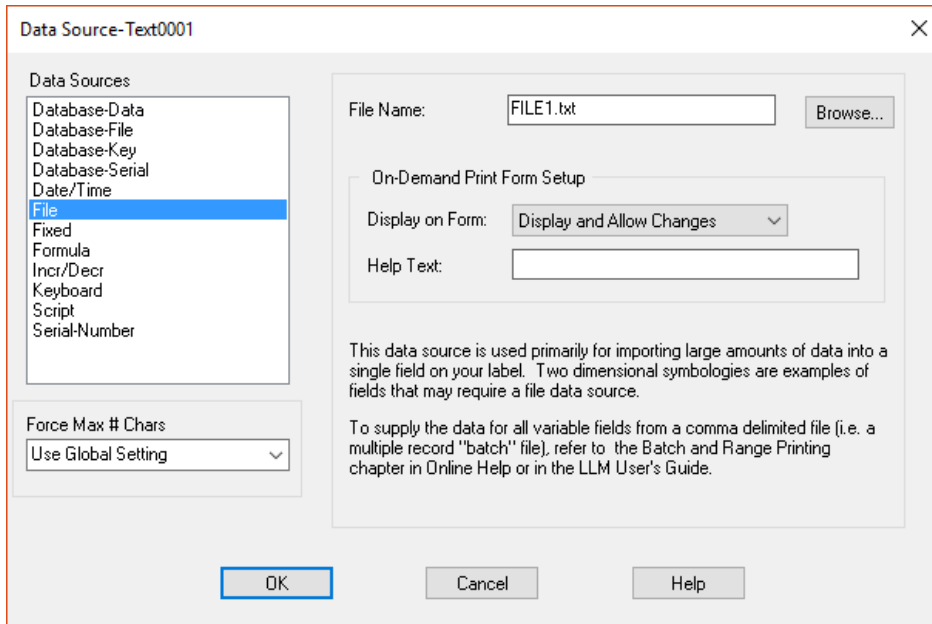
Versions

LPS 10 to LPS 11

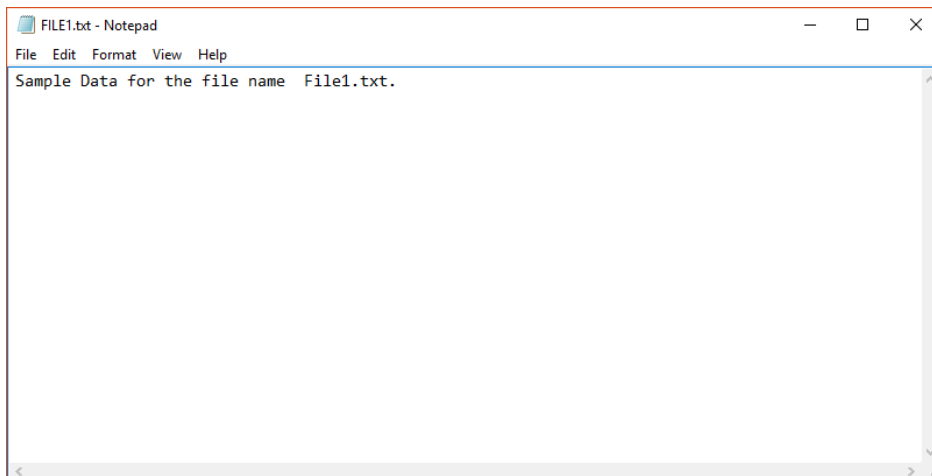
Environment

Any supported LPS family product environment

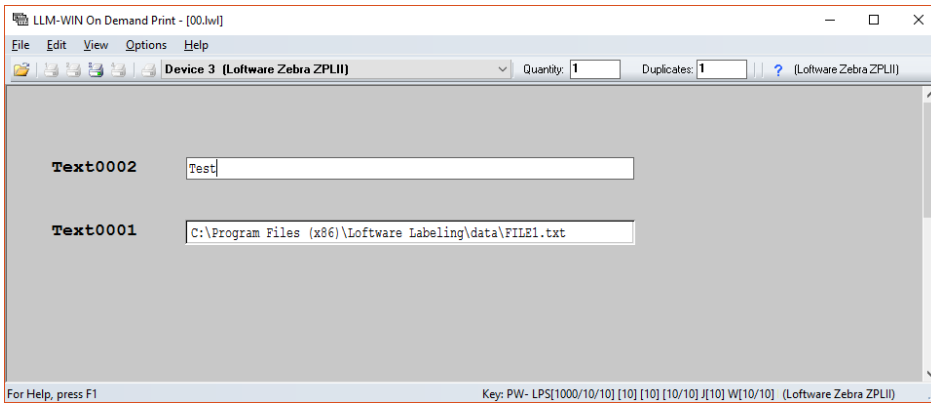
In the following example, the text from the **FILE1.txt** file will be printed in the **Text0001** field during printing by default.



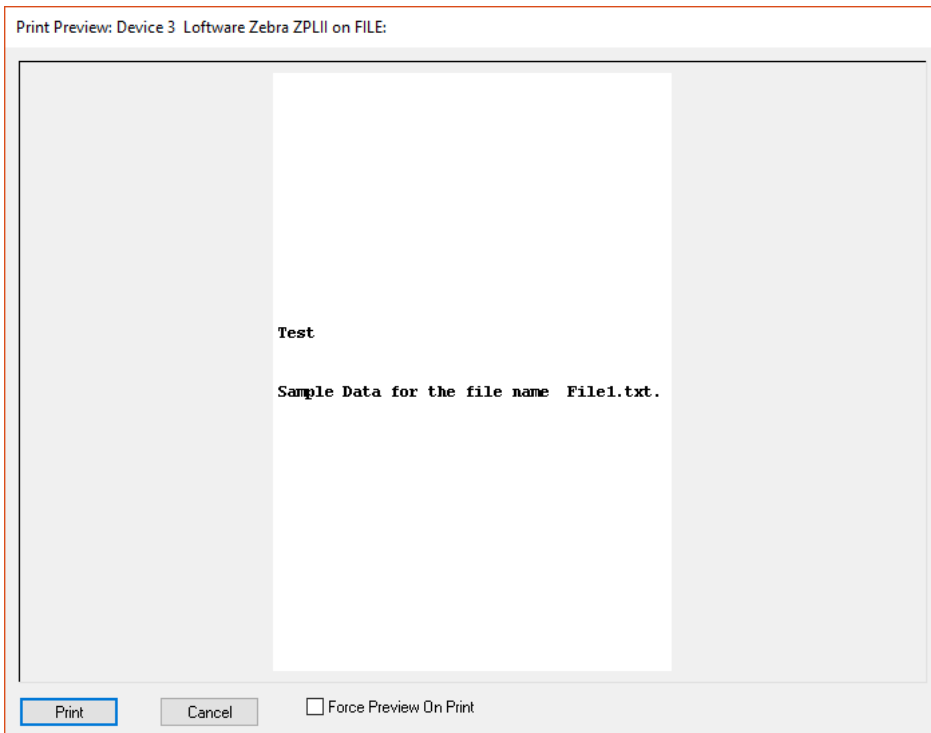
The **FILE1.txt** file contains the following text.



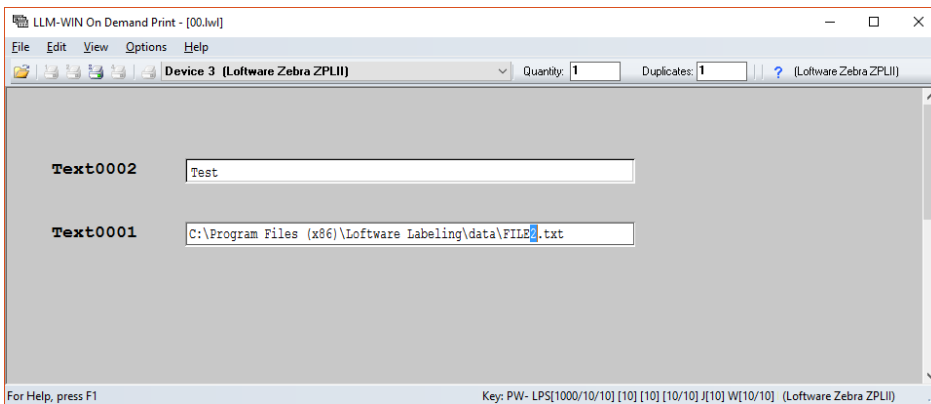
During On Demand Print, the full path and file name are shown in the **Text0001** field.

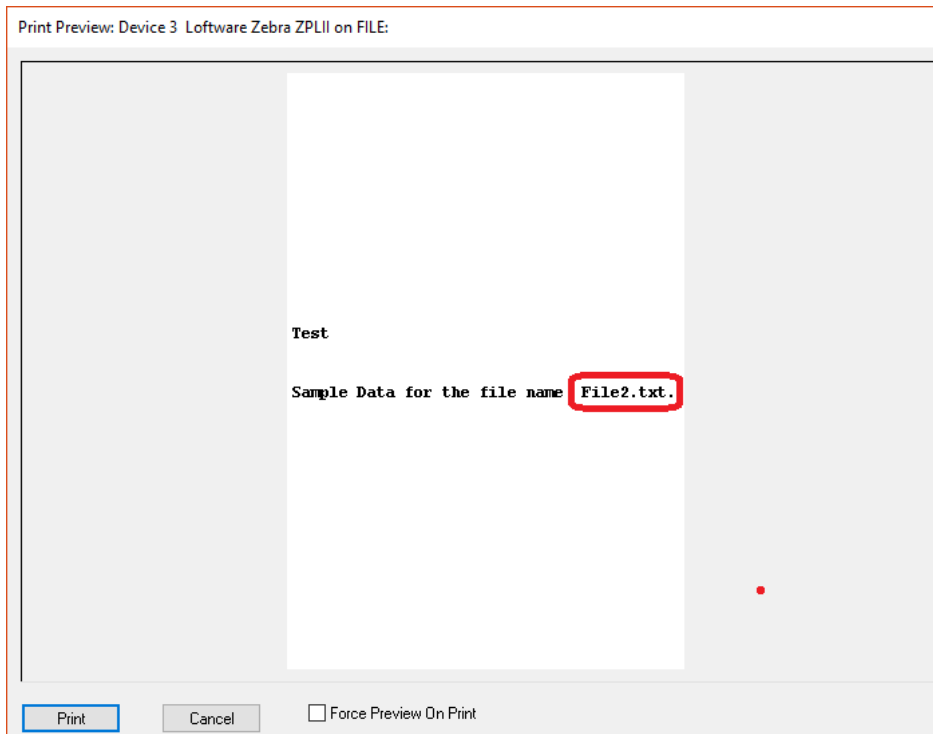


The actual print output will contain the text from the **FILE1.txt** file.



If the user changes the file name during a print, the text from the new file will be used.





Related Articles

Page:Printing to a PDF Driver in LPS/LLM

- [kb-information-article](#)

Page:How the Display and Allow Changes Setting on a File Data Source Affects the Printed Label

- [allow](#)
- [demand](#)
- [on](#)
- [data](#)
- [changes](#)
- [display](#)
- [source](#)
- [kb-how-to-article](#)
- [file](#)
- [print](#)

Page:Connector for SAP: How to Display More Than 10 Labels Per Page

- [per](#)
- [connector](#)
- [rows](#)
- [sap](#)
- [labels](#)
- [display](#)
- [kb-how-to-article](#)
- [page](#)

Page:How to Change the Data Type of an ODBC Text File Data Source

- [data](#)
- [odbc](#)
- [kb-how-to-article](#)
- [text](#)

Page:Printing a Label to a PDF Printer Does Not Create the PDF

- [print-to-file](#)
- [statusclient](#)
- [status](#)
- [macro](#)
- [guid](#)
- [kb-troubleshooting-article](#)
- [bullzip](#)
- [pdf](#)
- [file](#)

